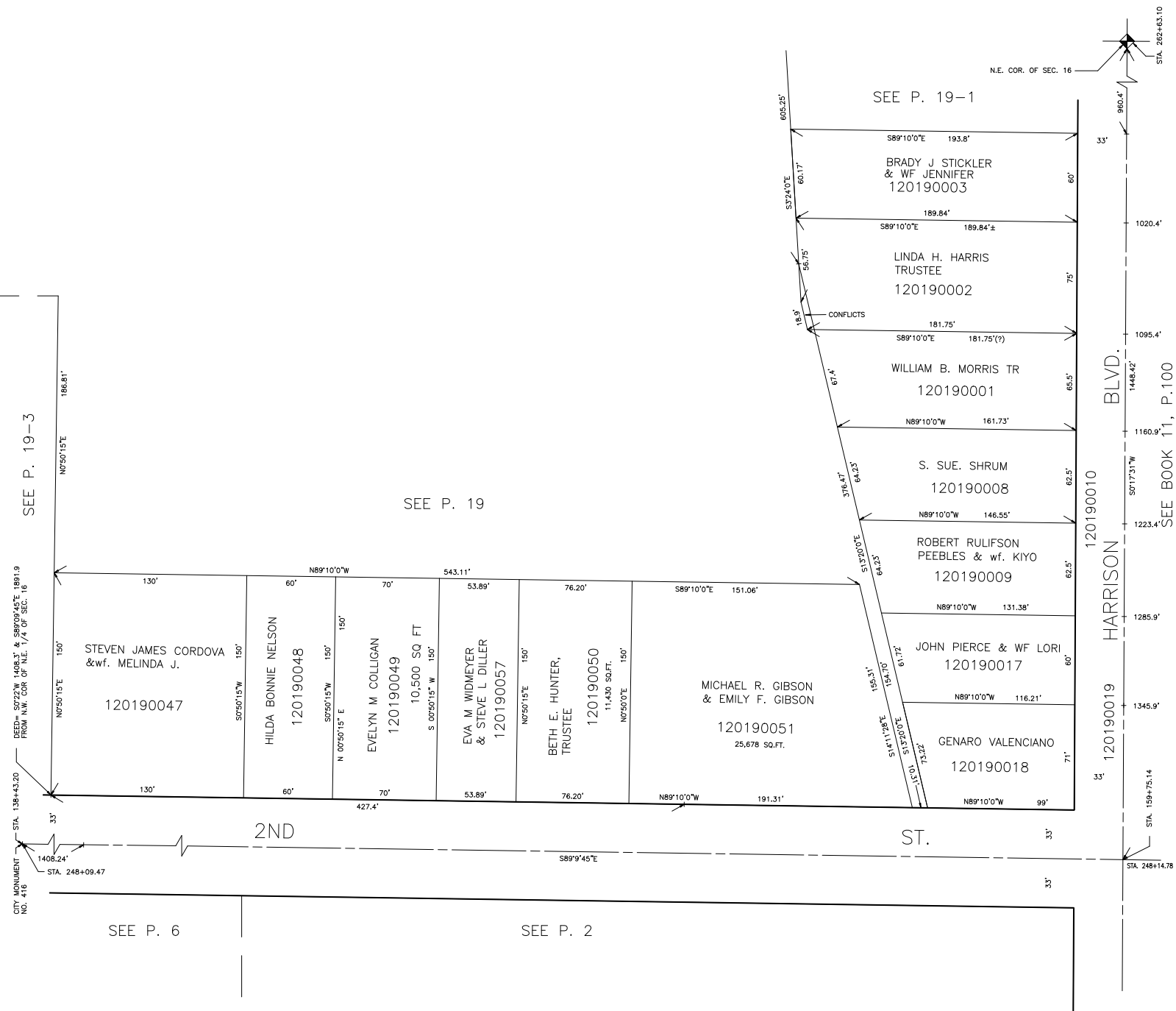


PART OF N.E. 1/4
SECTION 16, T.6N.,R.1W., S.L.B.&M.

IN OGDEN CITY
SCALE 1" = 50'

TAXING UNIT: 25

ALSO SEE P. 19-3



SEE P. 19-3

SEE P. 19

HARRISON BLVD.

ST.

SEE P. 6

SEE P. 2

SEE BOOK 11, P. 100

CITY MONUMENT NO. 416
 STA. 138+43.20
 BEED-S0722'W 148R.3' & S89°09'45"E 1891.3
 FROM N.H. COR. OF N.E. 1/4 OF SEC. 16
 STA. 1408.24'
 STA. 248+09.47

STA. 158+75.14
 STA. 248+14.78